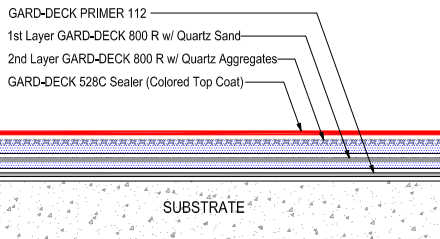
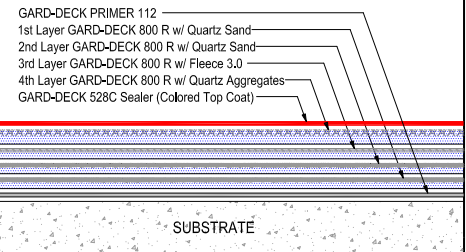


**GARD-DECK TRAFFIC COATING SYSTEM (Unreinforced)**



**GARD-DECK TRAFFIC COATING SYSTEM (Reinforced)**



Prime vertical surfaces of joint with Gard-Deck Primer 112 (Let cure). Install Gard Deck 430 N joint Filling Compound in a mortar consistency to full joint

Install Bond Breaker Tape at bottom of joint

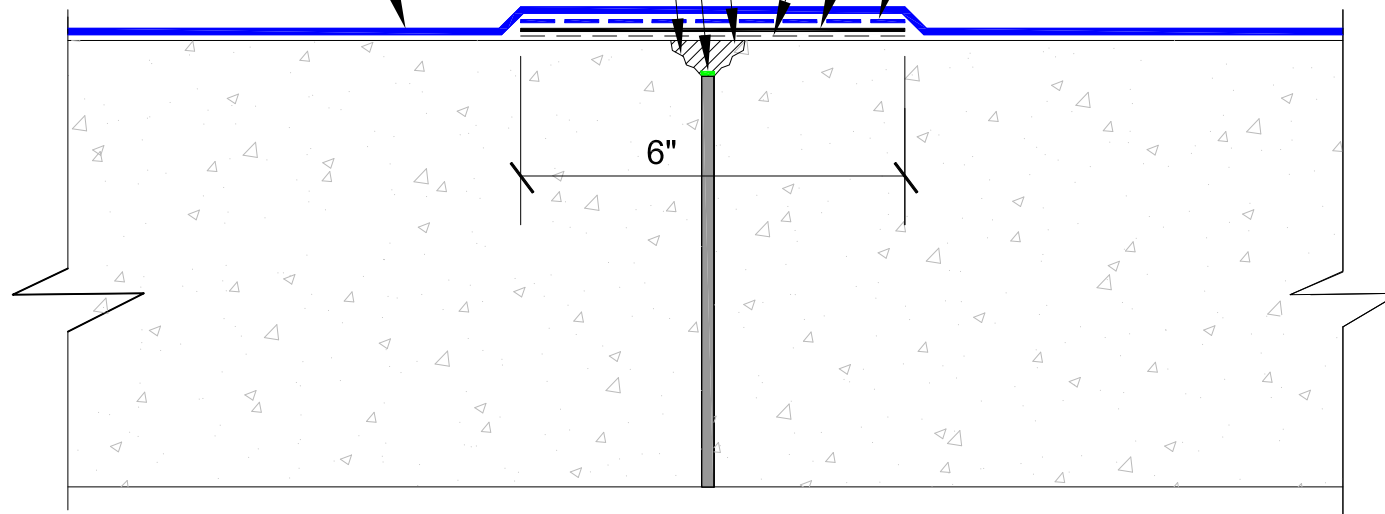
Chisel out / chase cracks over  $\frac{1}{16}$ " wide. Remove loose concrete. Open to a minimum of  $\frac{1}{4}$ " deep.

Gard-Deck Traffic Coating System

Gard-Deck Primer 112 centered over crack / cold joint. Let cure.

Gard-Deck Fleece Reinforcement set in a wet 30 mil bedding of Gard-Deck 800R. Brush out air bubbles.

Gard-Deck 800 R Top Coat over Fleece 3.0 Ensure no dry Fleece exist.



DETAIL NAME:

**COLD JOINT / CRACK OVER 1/16"**

JOB NAME:

Scale:

NTS

Date:

04-27-17

Drawing #:

GD-006